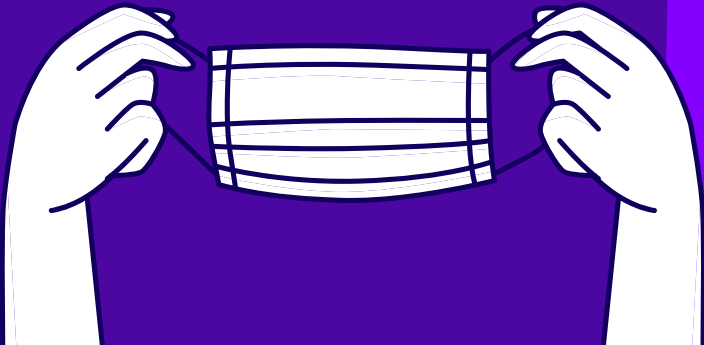




The Honorable
Sheila R. Tillerson Adams
Chief and Administrative Judge of the Circuit Court for
Prince George's County and the
Seventh Judicial Circuit of Maryland

How to Safely Wear a Mask

Source: World Health Organization

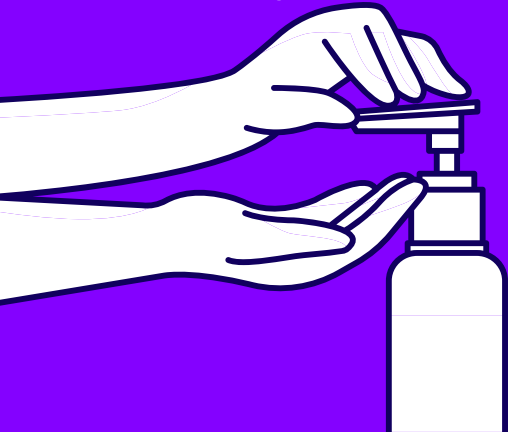


Do's

- ✓ Do cover your mouth, nose, and chin at ALL times while in the courthouse
- ✓ Do thoroughly wash hands with soap and water before touching the mask
- ✓ Do check the mask for any tears or holes
- ✓ Do find the top side where the metal piece or stiff edge is
- ✓ Do ensure that the colored side faces outwards
- ✓ Do place the stiff edge over your nose
- ✓ Do adjust the mask without leaving gaps on the side
- ✓ Do avoid touching the mask
- ✓ Do always use the straps to remove the mask

Do's

- ✓ Always cover your nose, mouth and chin when wearing the mask
- ✓ Keep the mask away from you or any surface when removing it
- ✓ Discard the mask immediately after use, preferably into a closed bin
- ✓ Wash your hands frequently throughout the day



Don'ts

- ✗ Do not use a ripped or damp mask
- ✗ Do not wear the mask only over mouth or nose (both must be covered)
- ✗ Do not wear a loose mask
- ✗ Do not touch the front of the mask
- ✗ Do not do other things that will require touching the mask
- ✗ Do not leave used mask within the reach of others
- ✗ Do not re-use the mask